

 @wbhs6form

2019/20

# Sixth Form Prospectus

A local Sixth Form with a national reputation

  
WBHS

Whitley Bay High School



let us  
guide you →



# hello

Thank you for your interest in Whitley Bay High School Sixth Form.

Our wide choice of subjects to study and outstanding examination success are just two of many reasons why you should join us. However our Sixth Form is about so much more than outstanding results.

I hope you enjoy reading this prospectus and choose to join us. You won't regret it! Use the website or email address to ask any questions, anytime!

*S. Williams*

**Steve Williams**  
Director of Sixth Form

find out more inside →

# contents

02	Welcome	22	Exciting Opportunities
06	Outstanding Reputation	26	Work Experience
11	The A Level Courses on Offer	35	Student Facilities
17	How many subjects?	41	How to Enrol
18	Who can join the Sixth Form?	43	Post-16 Bursary
19	Entry Criteria	44	Appendix – Subject Entry Requirements

jam packed with  
useful information!

Go to the Sixth Form section of our website: [whitleybayhighschool.org](http://whitleybayhighschool.org)

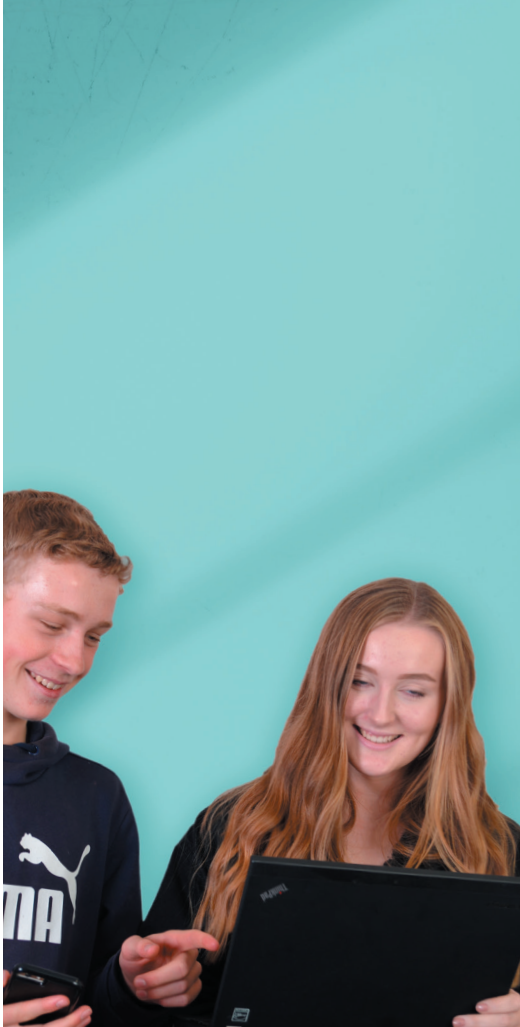
# be social

It would be a great idea to follow us on Twitter.  
Search for **@wbhs6form** for quick access  
to information, photographs and more.



#WBHS





“

**They (sixth form students)  
reach high standards and  
are strikingly successful  
in gaining places at  
university, training or  
employment**

**Ofsted**

”

# **Outstanding**

**reputation and  
academic success**

**Whitley Bay High School Sixth Form has an  
excellent reputation regionally and nationally for:**

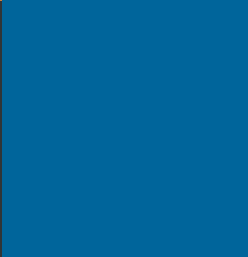


**Outstanding**  
Advice, Guidance  
and Care



**Outstanding**  
Retention  
Students who join courses  
complete them

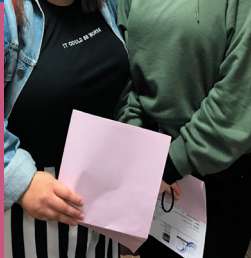
**Outstanding**  
Teaching



**Outstanding**  
Progression  
To university, apprenticeships  
or employment



**Outstanding**  
Academic Success



**One of very few Sixth Forms in the country where students regularly achieve significantly better A-level results than is predicted by their GCSE grades.**



**100%  
pass rate**

**85% A\* - C**

**57% A\* - B**



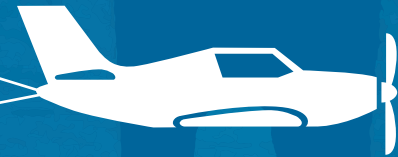


24%  
A\* - A



This year we submitted  
**20**  
applications to Oxbridge, Medicine and Dentistry including 14 to Oxford or Cambridge.

Our relatively low entry requirements make these results all the more impressive



A group of students is silhouetted against a bright blue sky with scattered white clouds. They are standing on a lush green grassy hill. Several students are holding long, thin poles, likely surveying equipment. The overall scene suggests an outdoor field activity or a practical lesson.

# A Level Courses



**You can choose from a wide range of A Level and equivalent courses.**

Teaching is outstanding at Whitley Bay High School and teachers devote a huge amount of time to making their lessons engaging and enjoyable. This is another reason why students enjoy the learning experience in the Sixth Form.

It is important to point out that the courses we offer are in some cases very different from the same subject at GCSE. You will need to look at the subject content information provided by the departments at the Sixth Form Courses Evening on 11th December, or on the website, very carefully to check that the course is what you expect.

Subjects	Subject Code
Art & Design: Fine Art	AQA 7242/7202
Biology	AQA 7402/7401
Business (Applied General Level 3)*	AQA Certificate TVQ01026 / Extended Certificate TVQ01027
Business Studies	AQA 7131/7132
Chemistry	AQA 7404/7405
Computer Science	AQA 7516D/7517D
Core Maths (Level 3 Mathematics Studies - AS only)	AQA 1350
Design & Technology: Design Engineering	OCR H404 - (A-Level only: No AS Option Available)
Drama & Theatre Studies	Pearson Edexcel 8DR0/9DR0
Economics	AQA 7135/7136
English Language	AQA 7701/7702
English Language & Literature	AQA 7706/7707
English Literature	AQA 7716/7717
Extended Project Qualification (Level 2 Project)	AQA 7993
Financial Studies (The London Institute of Banking and Finance - LIBF)*	LIBF Certificate CeFS / Diploma DipFS
French	AQA 7651/7652
Further Mathematics	Pearson Edexcel 8FMOK/9FMOK
Geography	AQA 7036/7037

German	AQA 7661/7662
Health & Social Care (Cambridge Technical Level 3)*	Certificate 05830 / Extended Certificate 05831
History	AQA 7041/7042
Information Technology (BTEC Level 3)*	Pearson Edexcel Certificate/Extended Certificate
Mathematics	Pearson Edexcel 8MA0/9MA0
Media Studies	OCR H009/H409
Music	AQA 7271/7272
Physical Education	OCR H155/H555
Physics	AQA 7407/7408
Psychology	AQA 7181/7182
Science (Applied General Level 3)*	AQA Certificate TVQ01028 / Extended Certificate TVQ01029

The subjects marked \* are the equivalent to an A Level qualification. These courses have a larger coursework component. Course codes may be subject to change from September 2019.

# Subjects and Course Codes

“The teachers here are always supportive. During my GCSEs when times were stressful, the teachers were really calm and they were always on hand to offer help.

I am studying Health and Social Care, Applied Science and Business. My plan is to go into mental health nursing after university. I have already done my research and hope to go to Teeside University as I really like the look of the course there.

I really enjoy studying at WBHS. It's friendly, relaxed and very supportive.”



**Amy Errington Year 13**  
**Studying Health and Social, Applied Science, Business**



## Continuous Academic Support

As part of our continuous help for students, every A Level subject provides additional support sessions each week to allow students to discuss the content covered in lessons or to get further help with any material they found difficult. Students (and parents) also receive regular Progress Reports to help set targets and work with teachers to fulfil their potential.

~ Well support you all the way! ~

I joined WBHS Sixth Form from Marden High School. I really enjoy studying here, as the teachers and students are very welcoming and friendly. Teachers at WBHS are very supportive and helpful especially if you are stuck on a certain topic. I hope to go on to Newcastle University to study Pharmacy or Maths.



**David Truong Year 12**  
**Studying Biology, Chemistry, Maths**



# How many A-levels & what is the EPQ?

With AS qualifications reduced in value and all courses designed to be assessed after two years, we advise all students to take 3 subjects. However, if you have a strong GCSE profile (average Grade 6 or more), you should consider taking the EPQ alongside your A Level options to broaden your curriculum by studying another area of interest or allow you to specialise in a topic beyond the specification.

The EPQ is the Extended Project Qualification. You choose the topic and title and a personal tutor takes you through the process and the independent, academic study skills required. The project can take any form and is worth 50% of an A-level.

A fourth A-level is permitted.  
Please discuss this in your guidance meetings.

# Who can join the Sixth Form?

Subject to numbers, anyone is welcome to join our Sixth Form, provided they meet our entry criteria and an A Level programme is the most appropriate course.

Whether you are joining us from Year 11 at Whitley Bay High School or coming from another school we want to make sure you get all the advice you need. We want to ensure the course you choose is at the right level, will take you in the direction you want to go and that you will be able to manage its demands. We will help you with these decisions.





## Entry Criteria

Students must have a supportive reference from their current Head of Year which suggests they can meet the requirements of an A Level course.

Students must achieve a minimum of five 4-9 (or equivalent) grade passes in separate subjects\* at GCSE level to start an advanced course. All subjects have specific entry requirements that students must achieve to start that course. (See the Appendix on page 44 of this Prospectus).

(\*Some GCSE and BTEC courses, e.g. ICT, Media, Health & Social Care, Business Communications, Engineering etc., will be classed as one subject, even if they are equivalent to more than one GCSE grade. Both English subjects and Double/Triple Science will continue to be classed as separate subjects.)



I have been in WBHS since Year 9 and I really enjoy the school. The teachers are very approachable and supportive; they will really go the extra mile to help you. The lessons are active and interesting, as students get to move around and participate, and are involved in the learning process. I chose the Sport Leadership option for Enrichment because I would like to study Sport Science at university and this option gives me the opportunity to improve my coaching skills and confidence.



**Charley Miller Year 12**  
**Studying Biology, Psychology and PE**

# Exciting enrichment beyond the classroom

A high quality Sixth Form should provide students with lots of opportunities beyond the classroom.

Our Enrichment programme is unrivalled in the North East. Enrichment is timetabled, like lessons, and is enjoyable, develops new skills and allows students to improve their CV when applying for jobs, or personal statement when applying for university.

This year our  
Enrichment programme  
includes:

John Muir  
Award



Higher Sports  
Leaders Award





Benton Dene  
School Placement



Certificate  
in Financial  
Studies



Think Law -  
Career Ready



Own Sourced Placement  
eg Hospital Ward



Introduction  
to Spanish



AS Core  
Maths

Music Theory  
Exams



Bar Mock Trial



Staff / 6th Form Reading Group



Jazz Band

Café Scientific

Debating Club



Choir

Young Enterprise



Soloist of the Year

Sports Teams

Drama Productions



Psychology/ Film Club



Wind Band



Creative Writing Group

University Challenge

Art Club

Orchestra

Bar Mock Trial

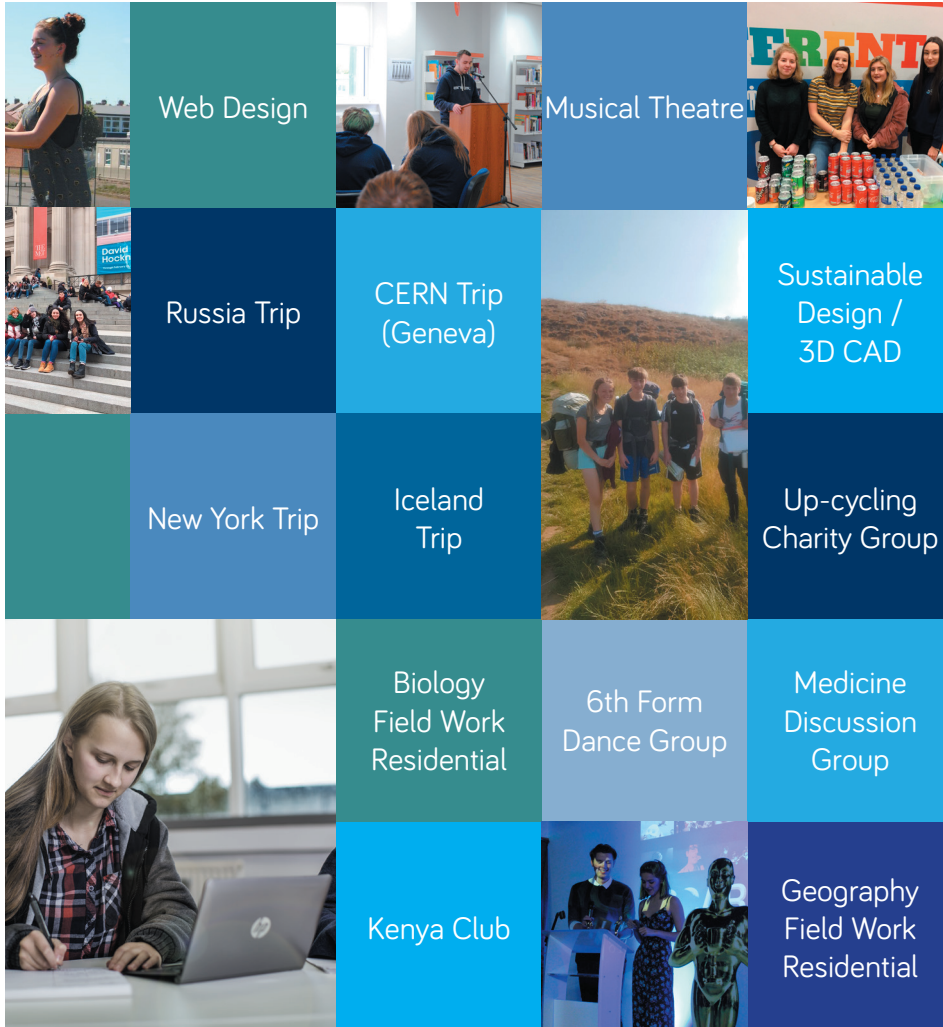
Up-cycling Charity Group



Senior Maths Challenge







Further ways to enjoy  
your time at WBHS  
Sixth Form

# Work Experience

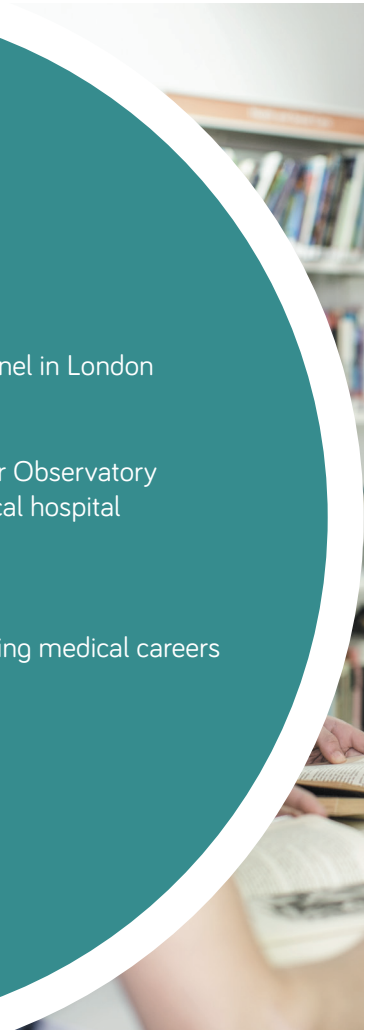
We appreciate the important value of relevant work experience to help students secure places on degree courses and employment.

All Year 12 students are supported in finding at least one relevant week-long work experience placement. Students often find this one of the most important factors in helping them decide what they want to do in the future.

Alison Wood is our Work Experience Co-ordinator who will support students through the whole process and help students secure relevant work experience opportunities.

Students have spent successful weeks:

- in TV production at the Discovery Channel in London
  - as a journalist with Metro Radio
  - in design at Berghaus
  - as an astronomy assistant at the Kielder Observatory
  - in speech and language therapy at a local hospital
  - as an engineer at British Engines Ltd
  - in law at a local solicitors
  - at a barrister's chambers in London
  - in hospitals for those students considering medical careers
  - as teaching assistants in local schools
- and many others





“

**Personal Development in the sixth form is a major strength, and the sixth form helps students develop into confident, sensitive and reflective adults**

**Ofsted**

”

I joined Whitley Bay High School Sixth Form from Marden High School. I believe that the teaching here is excellent. The students are very friendly and the overall atmosphere is lovely. There are countless opportunities at WBHS and the preparation for life after A Levels is very good.



**Priya Mann Year 13**  
**Studying Business Studies, Economics, English Language**



“

**The sixth form provides a wide range of courses, and students benefit from first-rate advice, guidance and support**

**Ofsted**

”



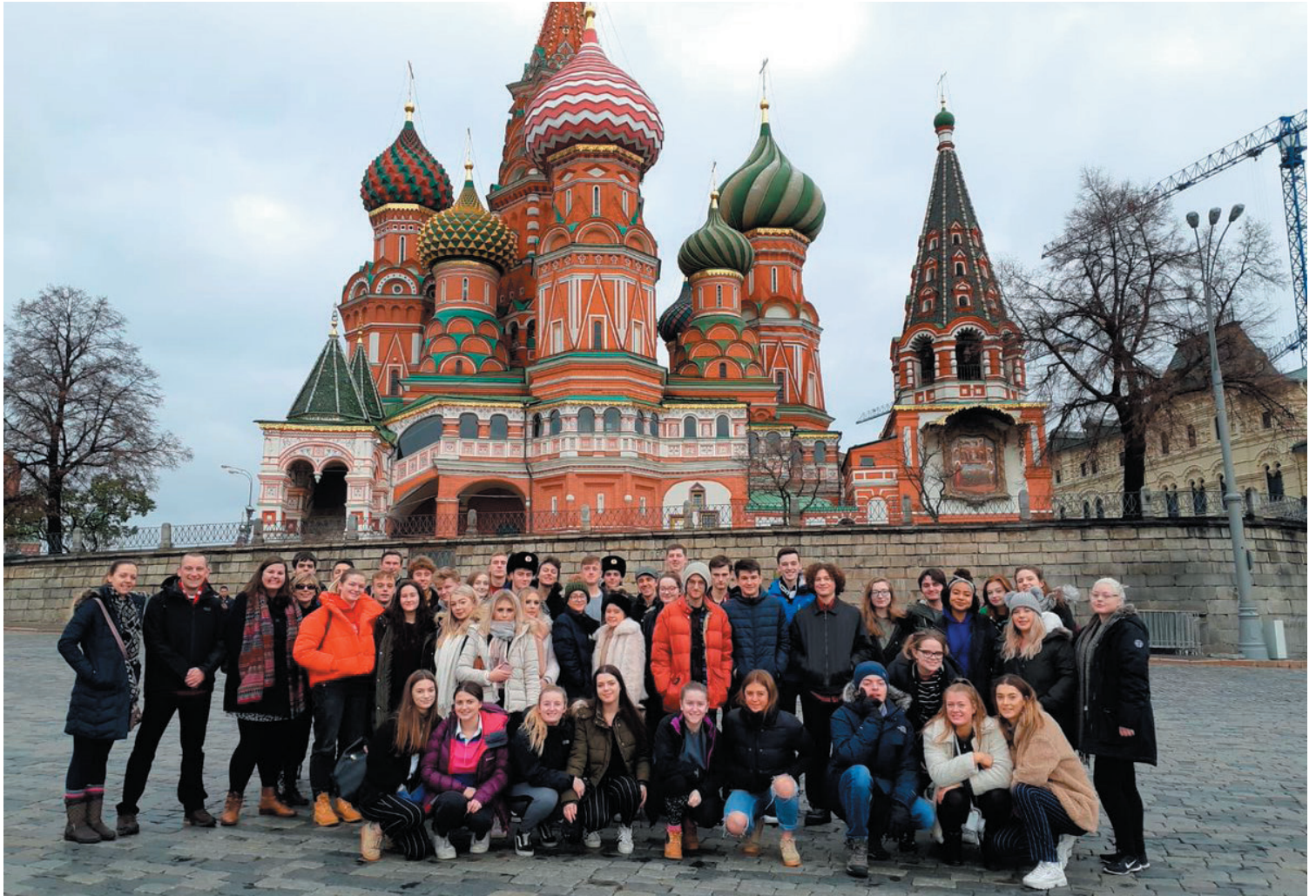


## Support is always available

We have a large Sixth Form team to support students throughout their time with us.

Students benefit from excellent advice, guidance and support, not only from their tutor, who they see every day, but also from members of the large, specialist Sixth Form Management Team, Progression Manager and fully qualified Counsellor. We have a continuous open door policy so that students can talk to a member of the Sixth Form Team at any time – we do not want any student to leave at the end of the day with a problem.

help is always available





WBHS has been extremely supportive to me throughout my time here both in the lower school and Sixth Form. The teachers are truly passionate about their subjects and it really comes across in their lesson and the extra support they are willing to give. I am interested in pursuing a degree at Oxbridge studying a soft science such as Psychology.



**Matthew Blake Year 12**  
**Studying Biology, English Literature, French, Maths**





# Student Facilities

The Sixth Form area has undergone a £1 million development. This has provided students with a large study area in which to relax and work with a bring your own device option to access our network.

Attached to this is a dedicated Sixth Form ICT Suite, allowing students to access a large number of internet linked computers. Within the study area there is a Sixth Form Café, serving hot and cold food and drinks from 8am.

Sixth Form students also make full use of our large modern Library which provides further access to ICT and is equipped with new multimedia resources and a constantly growing book stock. Important journals such as New Scientist, Economics Review and emagazine (the journal of English Language and Literature), are available here.

However, the most important resource within the Library is the Library staff, who go out of their way to support students with their work including helping students find sources and material for their studies. There is a specialised introduction to the Library for all Sixth Form students during one of the induction sessions to help students make the most of this excellent facility.

In both the Study Room and Library there is always a lovely atmosphere as students relax and carry out independent study in these informal settings.

“

Whitley Bay High School Sixth Form really supports you, not just to attain high achievements but also to experience things that are important to help build a future path and broaden your life skills.

”



**Claudia Simmons, Year 12**  
**Studying Art, English Literature, History**



**Ellie joined Whitley Bay High School from a local high school and studied English Literature, Media and Drama. Ellie is now studying Broadcast Media (Radio and TV) at Sunderland University.**

# Joining from another school? It's problem-free!

Joining another school is a daunting prospect for anyone. As I finished my GCSEs I became more and more scared about further education in a new setting. However, everyone at Whitley Bay ensured I felt welcome from the very first moment to results day in Year 13. I went from being the only person from my high school, to making lifelong friends who I adore.

The teaching style was amazing and thanks to the extensive amounts of support you receive from teachers and staff members, you never feel uncomfortable in the classroom. I finished my A Levels with grades I am so proud of which meant I could study my dream degree at my first choice university.

Due to the incredible range of extra-curricular activities on offer I took every opportunity I could to enrich my time at Whitley Bay High School outside my lessons. By the end of my two years I had taken part in the school musical, performed in some of the library's literature events, hosted the media Oscars (and won two!) and hosted the leavers' assembly. Not to mention the fact that I had spent a week in New York City with the Media department.

My advice to anyone considering Whitley Bay Sixth Form would be go for it! It was one of the best decisions I have ever made. I've come away more confident, independent and more prepared for university than I ever thought I could be.

Ellie Naseby

“

**Teaching is outstanding.  
There is an absolute  
determination amongst all  
staff to ensure that lessons  
are exciting and effective**

**Ofsted**

”





Don't miss this!

## How to Enrol

### Sixth Form Courses Evening

All students considering joining the Sixth Form should come to our Sixth Form Courses Evening on Tuesday 11th December, from 5 – 7pm. Here you will get the opportunity to speak with students and staff about A Levels you are interested in studying.

If you are currently at Whitley Bay High School you will receive support from us to help you think about all your Post 16 options.

If you are joining Whitley Bay High School Sixth Form from another school the first thing to do is contact Helen Davison or Alison Wood (our Sixth Form Administrators) on 0191 7317070 in order to be added to our mailing list.

Once you have completed an application form, which we will post, you will receive a guidance meeting with one of the Sixth Form Team.

Follow us on Twitter  
[@wbhs6form](https://twitter.com/wbhs6form) to  
keep up to date!



“

I really enjoy studying at WBHS because the school allows us the freedom to express ourselves and we are treated as adults. The lessons are fun and I feel confident taking part in the discussions and learning. I am part of the school play this year and I am really excited about it. The audition process was stressful but gave me a good insight for the future because I am planning to go to Drama School. I would love to be an actress on TV or in films.

”



**Meriel Garrod, Year 12**  
**Studying English Literature, Drama and Biology**

# The Post 16 Bursary

Students who are entering Post 16 education at any institution may be eligible for the Post 16 Bursary which is funded by the government. Its purpose is to help those students who need support in meeting the costs of Post 16 education.

## You will qualify for funding if you are any of the following:

- In care
- A care leaver
- In a family in receipt of income support
- A student with learning difficulties or disabilities in receipt of both Employment Support Allowance and Disability Allowance.

If so you will qualify for £1,200\*  
per year from the scheme



- Eligible for Free School Meals
- In a family in receipt of Working Tax Credit and with a gross household income of £35,000 or less
- A young person aged 16-18 looking after a sick or disabled relative
- In a family with a gross household income below £35,000

If so you will be eligible to receive up to £700\*  
per year from the scheme.

In addition, any funding that is left will be used as a Hardship Fund for learners experiencing severe financial hardship. If you have any questions about this Bursary please do not hesitate to contact the Sixth Form Team.

\*This figure was correct at time of going to print.

# Appendix

## Subject Specific Entry Requirements

Courses currently on offer

### **Applied Business Level 3 Certificate**

Students must achieve at least a grade 4 in GCSE English Language or Literature. It would be desirable if students had studied GCSE Business Studies, but this is not essential.

### **Health & Social Care Level 3 Certificate**

Students must achieve at least a grade 4 in GCSE English Language or Literature and grades 4 4 in GCSE Science. A GCSE in Health & Social Care and/or Child Development would also be an advantage.

### **Applied Science Level 3 Certificate**

Students must achieve at least grades 5 4 in Double Award Science and a grade 4 in Maths and English Language or Literature.

### **Applied ICT Level 3 Certificate**

Students must achieve at least a grade 4 in GCSE English Language or Literature. If students have studied GCSE ICT they must achieve a minimum of grade 4.

### **Art & Design: Fine Art**

Students must achieve at least a grade 5 in Art and Design at GCSE level. Students must also have at least a grade 5 in English Language or Literature.

### **Biology**

Students must achieve at least grades 6 6 in GCSE Double Award Science and a grade 5 in GCSE Mathematics. Students studying Chemistry, Biology and Physics as separate sciences must achieve a minimum of a grade 6 in Biology and one other science and grade 5 in Maths.

### **Business Studies**

Students must achieve at least a grade 5 in GCSE English Language or Literature and a minimum of grade 4 in Mathematics. It would be desirable if students had studied GCSE Business Studies, but this is not essential.

### **Chemistry**

Students must achieve at least grades 6 6 in GCSE Double Award Science and a grade 6 in GCSE Mathematics. Students studying Chemistry, Biology and Physics as separate sciences must achieve a minimum of a grade 6 in Chemistry and one other science and grade 6 in Maths.

### **Computer Science**

Students must achieve a minimum of two grade 6 qualifications in Science and a grade 7 in Mathematics.

### **Design Engineering**

Students must achieve at least a grade 5 in GCSE Mathematics and ideally grades 5 5 in Double Award Science. A grade 5 in Electronic Products/Engineering at GCSE would also be desirable.

### **Drama & Theatre Studies**

Students must achieve at least a grade 5 in GCSE English Language or Literature.

### **Economics**

Students must achieve at least a grade 6 in GCSE Mathematics and English Language or Literature.

### **English Language**

Students must achieve at least a grade 6 in GCSE English Language and a grade 5 in English Literature.

### **English Literature**

Students must achieve at least a grade 6 in GCSE English Literature and a grade 5 in English Language.

### **English Language & Literature**

Students must achieve at least a grade 5 and 6 in either combination in GCSE English Language and English Literature.

### **French**

Students must achieve at least a grade 6 in GCSE French.

### **Further Mathematics**

Students must achieve a grade 8 or 9 in GCSE Maths.

### **Geography**

Students must achieve at least a grade 5 in GCSE Geography and a grade 5 in English Language or Literature.

### **German**

Students must achieve at least a grade 6 in GCSE German.

### **History**

Students must achieve at least a grade 6 in GCSE History. If students have not studied History at GCSE then they must achieve at least grade 6 in English Language or Literature.

### **Mathematics**

Students must achieve at least a grade 6 in GCSE Mathematics.

### **Media Studies**

Students must achieve grades 4 and 5 in either combination in GCSE English Language and English Literature. In the case of two 4s in English, an Art grade of 6 or higher may be taken into consideration.

### **Music**

Students must achieve a minimum of a grade 5 in GCSE Music but should also be able to sing or play a musical instrument to at least grade 5 ABRSM/LCM/Trinity or Rockschooll standard. We strongly recommend that students take lessons on their chosen instrument.

### **Physical Education**

Students must achieve at least grade 4 5 qualifications in Double Award Science, and grade 4 and 5 in either combination in GCSE English Language and English Literature. If students have taken PE at GCSE it would be expected that they will have achieved at least a grade 5 on the theory paper.

### **Physics**

Students must achieve at least grades 6 6 in GCSE Double Award Science and a grade 6 in GCSE Mathematics. Students studying Chemistry, Biology and Physics as separate sciences must achieve at least a grade 6 in Physics and one other science and grade 6 in Maths.

### **Psychology**

Students must achieve at least grades 4 5 in Double Science and grade 5 in either English Language or Literature and Maths.



**Classroom  
relationships  
are based on  
respect and a  
thirst to learn**

**Ofsted**



Whitley Bay High School  
Deneholm  
Whitley Bay  
Tyne and Wear  
NE25 9AS

0191 731 7070  
sixthform@whitleybayhighschool.org  
www.whitleybayhighschool.org  
@wbhs6form

